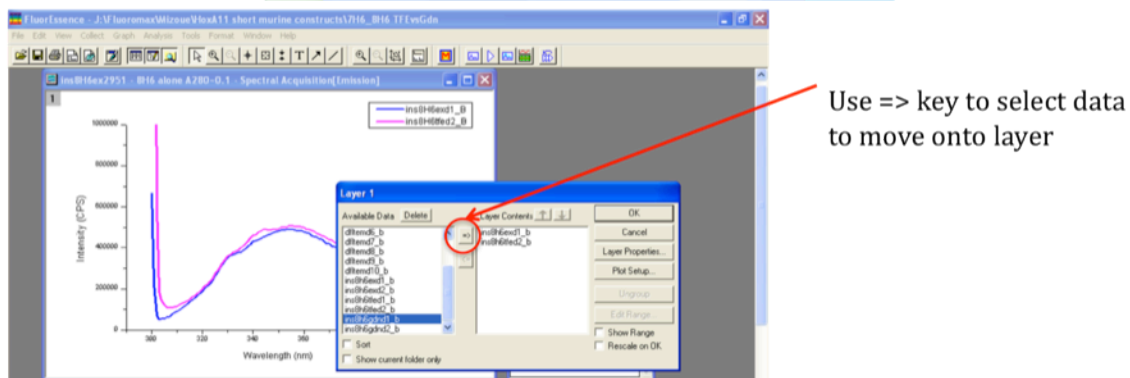
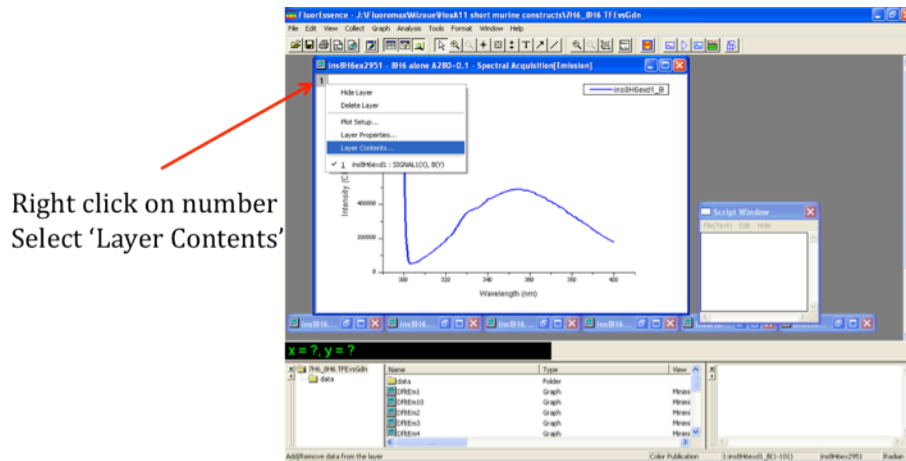


Answers to FAQ's on Graphical Display in Origin/FluorEssence

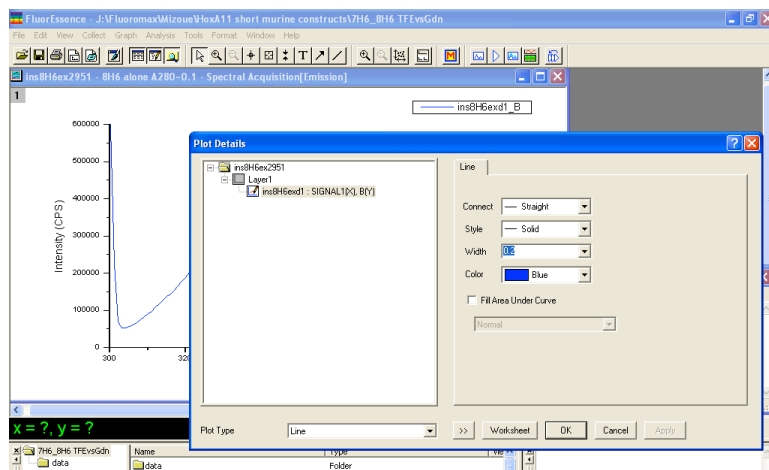
How do I overlay 2 spectra?

In the upper left corner of your plot, is a square with the number one. Right click on this square and select 'layer contents.' You can select any of the available data and move it into the layer using the => key.



How do I make the plot lines thicker or a different color?

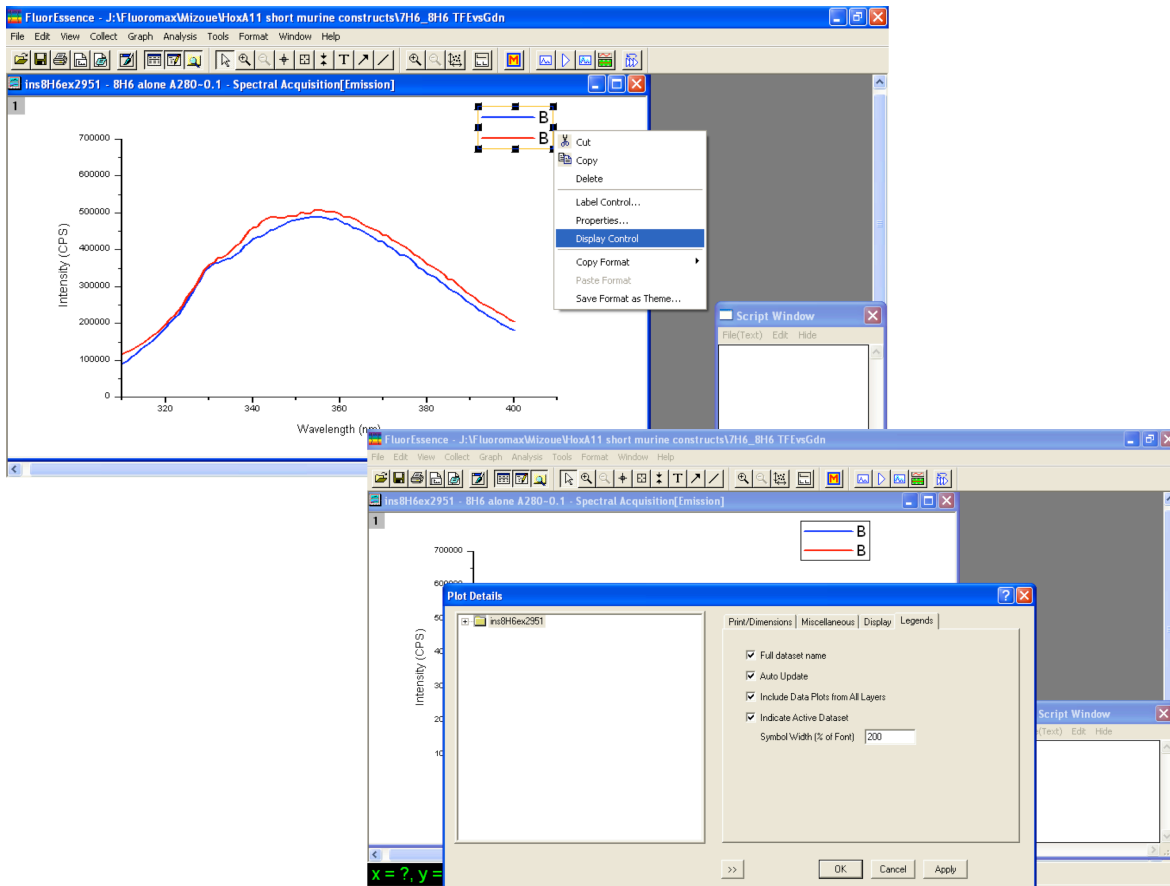
Double click on the line you want to change. It will bring up a 'Plot details' window (see below) which will allow you to specify the line width as well as color for all plots within the layer.



How do I get the legend to display the actual data file names?

1. Right click on the plot legend.
2. Go to Display Control.
3. Go to the Legends tab.
4. Check the Full dataset name box.
5. Hit Apply.

Do not alter the legend within 'properties' as you will likely screw up the Origin fields!



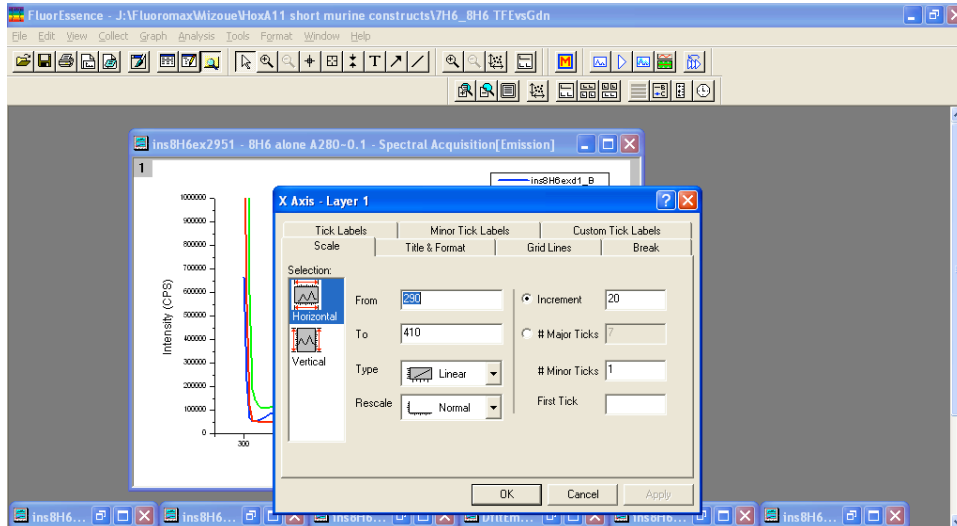
How do I rescale my graph to see everything?

The Rescale button in the toolbar will automatically scale so that everything is on screen.



How do I adjust the scale to see specific regions of a graph?

To define specific ranges for the x and y axes, double-click on the axis you want to edit. The following screen comes up which allows you to adjust scale, increment, etc.



How do I add a date/time stamp?

Click on the clock icon in toolbar and it will automatically add a date/time stamp to the selected window. To remove the stamp, you need to right click on it and select “delete.”



How do I add a title to my plot?

1. Click on the T button (see below).
2. Click on your plot.
3. Start typing in a title.

To delete, right click on the text and select ‘delete.’



How do I export my graph as an image file?

1. Go to the File menu
2. Choose Export Page
3. Choose the file format.
4. Save.